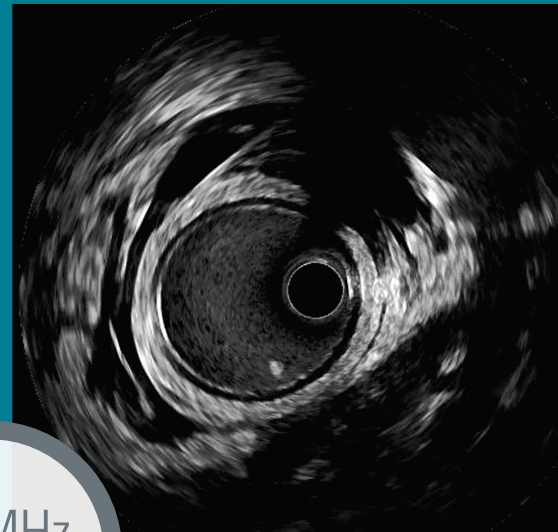


EASIER TO READ IMAGES

with the depth to image large
vessels provided by a new
wideband transducer

60 MHz
Transducer



All cited trademarks are the property of their respective owners.
CAUTION: The law restricts these devices to sale by or on the order of a physician. Indications, contraindications, warnings and instructions for use can be found in the product labelling supplied with each device. Information for use only in countries with applicable health authority registrations. This material not intended for use in France.

IC-602303-AA-JAN2019. CreativeServices.

**Boston
Scientific**
Advancing science for life™

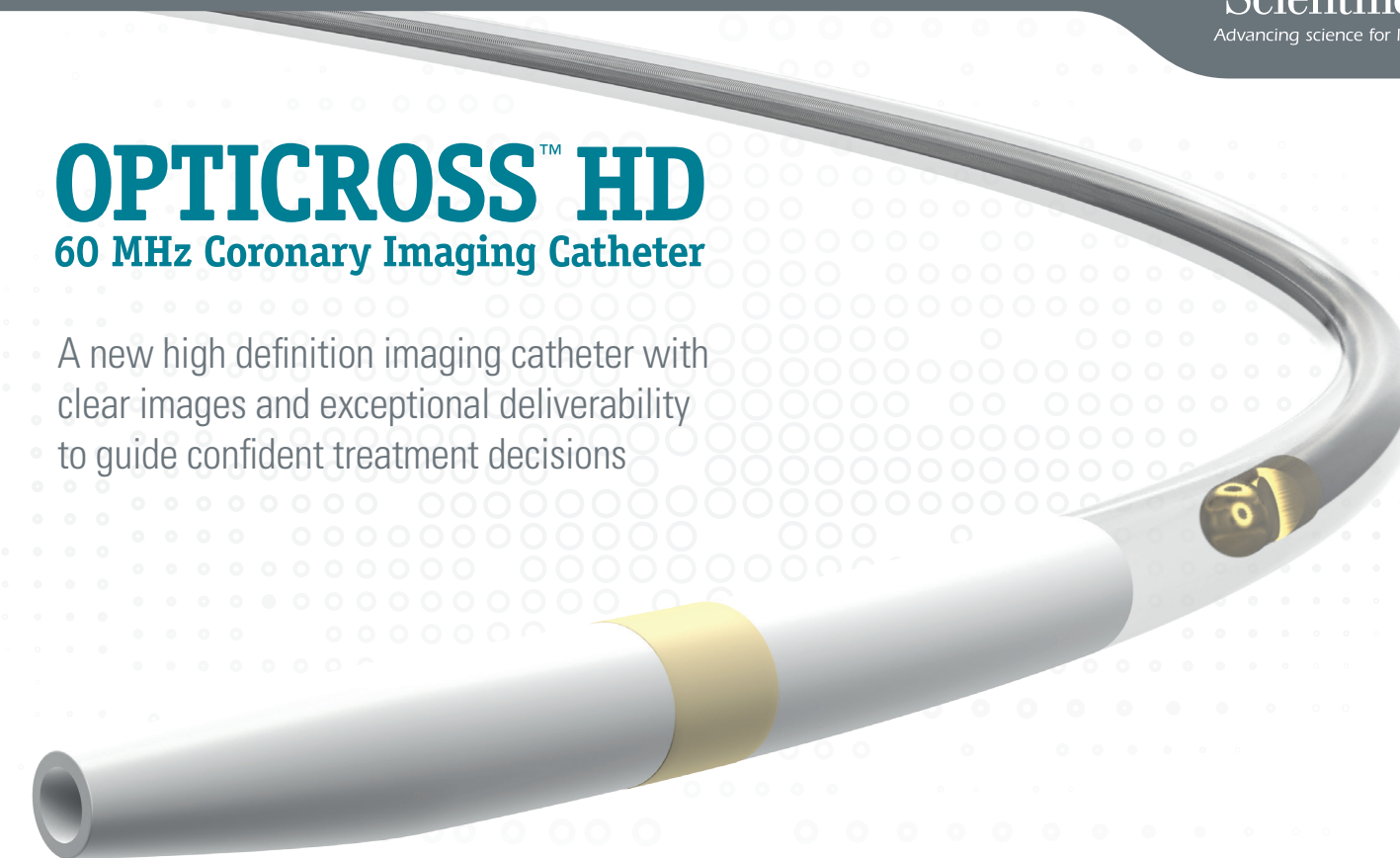
www.bostonscientific.com/PCI-Guidance

© 2018 Boston Scientific Corporation
or its affiliates. All rights reserved.
DINCAR2738EA

**Boston
Scientific**
Advancing science for life™

OPTICROSS™ HD 60 MHz Coronary Imaging Catheter

A new high definition imaging catheter with
clear images and exceptional deliverability
to guide confident treatment decisions



EXCEPTIONAL DELIVERABILITY

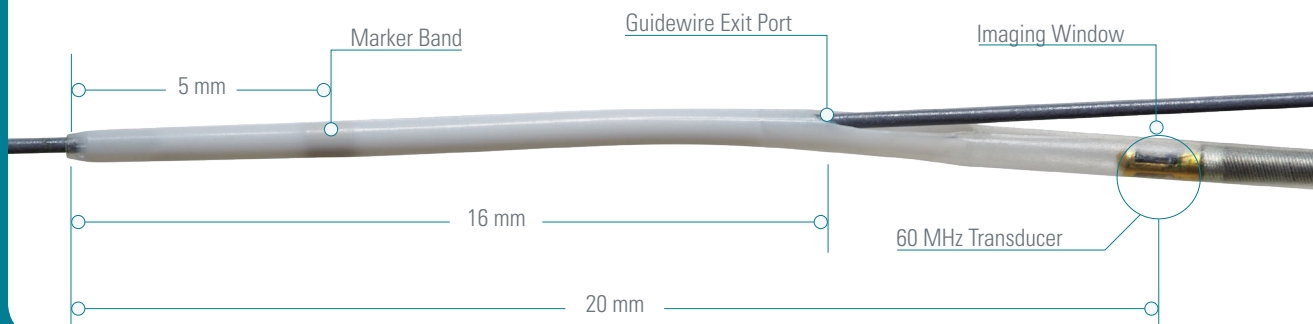
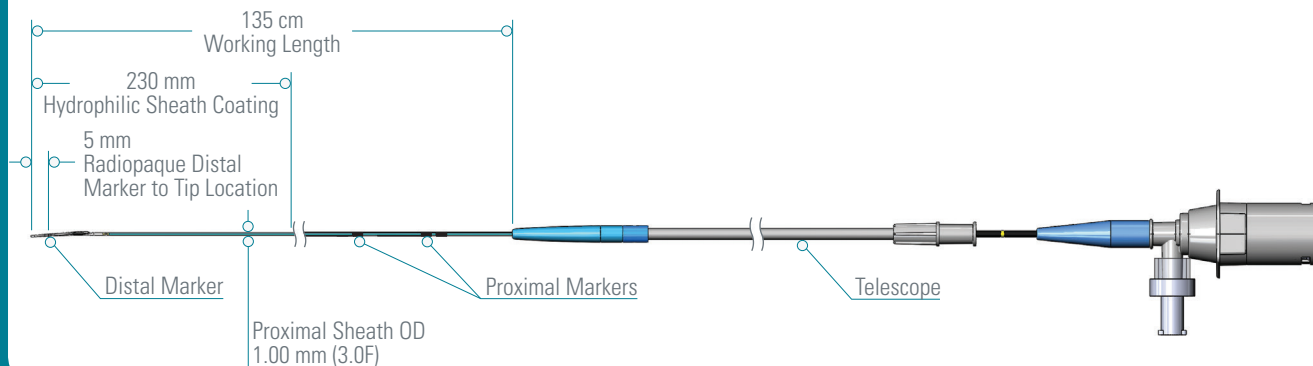
Well-balanced engineering design

5F COMPATIBLE

Assist in more cases

WIDEBAND 60 MHZ TRANSDUCER

Precise image with 6 mm depth for large vessel assessment



PRODUCT SPECIFICATIONS

Guide Catheter Compatibility	5F ($\geq 0.058"$)
Guidewire Compatibility	$< 0.014"$
Transducer Frequency	60 MHz
Maximum Diameter Penetration	6 mm
Entry Profile	0.026"
Crossing Profile	3.1F
Tip to Transducer Distance	20 mm
Distal Marker to Transducer	15 mm
Working Length	135 cm
Hydrophilic Sheath Coating	Bioslide™

ORDERING INFORMATION

Ref/Catalog Number	H749 3935202 0
Order Number (GTIN)	08714729960751
Description	HD IVUS CE

The C-Code used for the OPTICROSS™ HD Coronary Imaging Catheter is C1753. C-Codes are used for hospital outpatient device reporting for Medicare and some private payers. Note: Boston Scientific Corporation is not responsible for correct use of C-Codes on submitted claims; this information does not constitute reimbursement or legal advice.

NECESSARY EQUIPMENT

The following are required for use of the OPTICROSS HD 60 MHz Coronary Imaging Catheter:

- iLab™ POLARIS Multi-Modality Guidance System
- MDU5 PLUS™ Motor Drive
- Automatic Pullback Sled (optional)